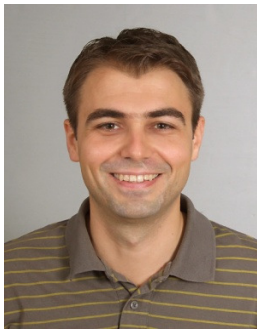


# Participants of the 6<sup>th</sup> SIENA workshop in Groningen (January 23-27, 2012)

---



**Valentin Danchev.** I am currently a DPhil (PhD) student of International Development at the University of Oxford. My original training is in sociology, receiving my master degree in Sociological Research from Essex University. My doctoral research is concerned with the network structure and dynamics of the patterns of international migration between (and within) Africa and Europe. I am interested in both macro-level networks of migration (international migration flows as links that connect multiple locations) and interpersonal migration ties (migrant networks that connect migrants and non-migrants to one another).

**Elisabetta De Cao.** I took my undergraduate and master degrees in statistics at University of Padova. In 2006, I applied for a PhD in Econometrics and Empirical Economics at Tor Vergata University in Rome. In June 2011 I defended my thesis in "Essays on the econometric analysis of health outcomes". The thesis was a collection of three empirical papers on health related issues. I am currently working as post-doc on a project about infectious disease modeling at the University of Groningen. I am mainly interested in studying health in developing countries, and I like to combine different methodological techniques used in economics, statistics and epidemiology.

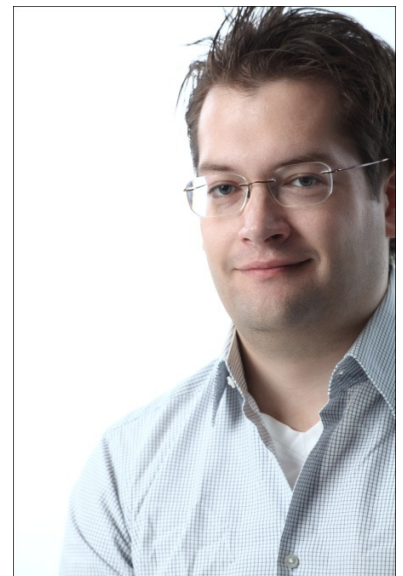




**Eva Jaspers.** I am an assistant professor at the Department of Sociology at Utrecht University. My main research areas are interethnic contact and attitudes, as well as the households of gay men and lesbians. I am also the national coordinator of the CILS4EU or YES! Data collection program (see: [www.yesonderzoek.nl](http://www.yesonderzoek.nl) for a website in Dutch). We interview around 5,000 teenagers at multiple occasions in their class rooms in four European countries. We also collect

sociometric data from these pupils. I attend the SIENA course in order to learn how to properly analyze the data from the YES! Project. My main interest with these longitudinal network data of over 1,000 classes lies in the causes and consequences of the existence of negative ties between classmates.

**Andreas Jungherr** is a Research Associate and Phd Student at the Chair for Political Sociology at the University of Bamberg, Germany. In his thesis he examines the structure and the dynamics in communication networks of politically vocal Twitter users in Germany. In general he is interested in the way human computer interactions through online tools influence political communication and how data documenting these interactions can be used to analyze political behavior on- and offline. He has worked on political communication on Twitter, participation on e-petition platforms, and online campaigning during the German federal election 2009. He also works as a consultant for the German party CDU for online campaigning. In this capacity he worked for the webcamp09 (Hessen 2009, state election), the teAM Deutschland (Germany 2009, federal election) and NRW für Rüttgers (Nordrhein-Westfalen 2010, state election). He holds a M.A. in Political Science, History and American Studies from the University of Mainz, Germany.



Dr. Ir. **Mark de Reuver** is assistant professor at the Faculty of Technology, Policy and Management of Delft University of Technology. He received a PhD (2009) on his thesis on Governance of Mobile Service Innovation in Co-evolving Value Networks.



His research focuses on how networks of organizations can bring new services to the market. Specific focus on governance issues, i.e. how are power, contracts and trust used to organize service innovation activities. Domain of research is ICT-enabled services, e.g. mobile Internet services and smart living / smart home services. Research methods include both quantitative (i.e. SEM, network analysis) and qualitative approaches. He teaches courses on quantitative methods (including network analysis), e-business and mobile service innovation.

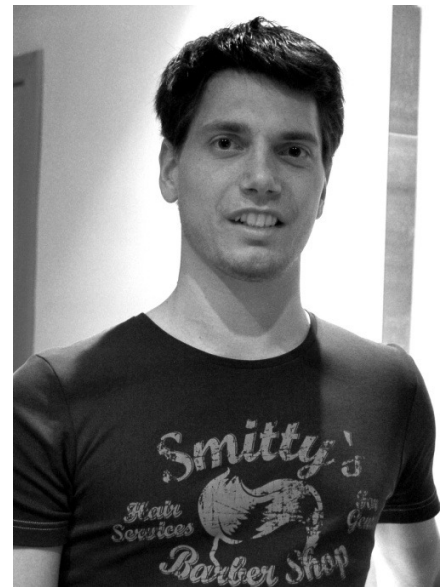


My name is **Sanne Smith** and I am a Phd student at the sociology department of Utrecht University. In my dissertation, I study ethnic boundaries in adolescent friendship networks in England, Germany, the Netherlands and Sweden. Many aspects of interethnic friendship are of interest to me: I plan to examine the influence of other types of homophily, parental attitudes and behaviour, school and class characteristics, and meeting opportunities outside school on ethnic boundaries in adolescent interethnic friendship choice. In addition, I plan to study the stability of interethnic friendships compared to same-ethnic friendships. I use the CILS4EU dataset, which contains longitudinal data (for now 2 waves) of adolescents and parents in around 800 school classes across the four countries. In my free time, I love spending time with friends and watching movies or series. Also, I like to pretend I have musical talents (guitar / ukulele and singing) but in reality I am terrible due to structural neglect.



**Emmanouil Tranos.** My research focuses on the utilization of digital data in urban and regional analysis. In this framework, I have a special interest in complex spatial networks including digital networks with spatial reflection. My PhD Thesis analysed the Geography of the Internet Infrastructure across the European cities. Currently, in the frame of the COSMIC project at VU Amsterdam, I am working on the following themes: IP networks from a dynamic and spatial standpoint; urban analysis using mobile phone data; analysis of other geographic phenomena from a network perspective (i.e. migration flows).

**Denis Wegge.** I am a PhD student at the University of Antwerp, where I also obtained my master in Communication Studies and master in Comparative and European Politics. My interests are information technology, online communication, and the way young people use these applications. In July 2010 I started working at the Communication Studies department, doing research on cyberbullying by young adolescents. Cyberbullying, or bullying by using electronic media, has increasingly gained attention in the last decade. My study assesses offline and online bully behavior and relates this to the social interactions of adolescents. More specifically, it considers who-bullies-who and assesses the influence of friendship (and other) ties.





**Cihan Yilmaz** is a Ph.D. candidate in the department of Organization Studies and Management at the Bilgi University İstanbul under the supervision of Professor Ahmet Suerdem.

I finished my B.Sc. study on Mechanical Engineering and M.Sc. study on Engineering Management at “İstanbul Teknik Üniversitesi” in Turkey. Nowadays, I’m working on my PhD dissertation, which I’ve started in May 2011. I believe that RSiena and some other SNA tools will be

basis of my entire thesis. My PhD project deals with the investigation of longitudinal network data to understand the effect and influence that social networks have on the structuration process of social capital formation. My first article will be about group decision making process. My aim is to use RSiena to investigate and to analyse the interaction between individual cognitive structure and network embeddedness within social groups. I have some experience with social network analysis, and would like to elaborate my knowledge of RSiena and to deepen my understanding how to analyze longitudinal network data, how to model dynamics of social networks during this workshop.

In my free time I enjoy swimming, boxing and travelling; so I try to spare one day before each conference/workshop/business trip to see the sights of the city and the social environment.

---

Other registered participants: **Nicola Barbán, Enis Bicer, Zsófia Boda, Lea Ellwardt, Aart Franken, André Grow, Sara Geven, Karim Hammou, Tim Huijts, Valeria Ivaniushina, Yuval Kalish, Annemarie Kiewiet, Tina Kretschmer, Pablo Lucas, Kirill Maslinskiy, Ralph Mennes, Jannik Meyners, Bálint Néray, Kimberley Nies, Beau Oldenburg, Judit Pál, Kim Pattiselanno, Rozemarijn van der Ploeg, Tatevik Poghosyan, Simone Sbrilli, Miranda Sentse, Vera Titkova, Frank van Tubergen, Lidwien van de Wijngaert, Line Witvrouw, & Urs Wolter.**